

FLYING BOATS & SPIES

A NICK GRANT ADVENTURE

By Jamie Dodson

Synopsis:

1935! The winds of war have begun to fan the flames of conflict across the Pacific. As Nick Grant tries to support his mother and sister during the Great Depression, he's swept into a deadly contest between spies struggling to control the Pacific Ocean.

Nick's life changes abruptly the moment world famous aviators, Charles and Anne Lindbergh, land at Alameda airport. After Nick refuels their plane, Anne takes him aside and offers him a month's wages to deliver a mysterious map case to Bill Grooch, aboard the tramp steamer *S.S. North Haven*.

Desperate for money, Nick agrees. Suddenly the map case and Grooch catapult him into a quiet, but deadly, cat and mouse game between U.S. and Japanese spies.

Nick becomes a vital player as the U.S. and Japan vie for advantage and control of the strategic islands of the Pacific.

FLYING BOATS & SPIES

Sixteen-year-old Nick Grant joins the crew of the *S.S. North Haven* to build the Skyway to Asia for Pan American Airways — island stepping stones across the Pacific for the great flying boats. However, it poses a threat to Imperial Japan's desire to control the Pacific.

Nick battles raging seas, tropical storms and Japanese spies as he journeys to manhood across the world's largest ocean.



A NICK GRANT ADVENTURE

Contact the Author

jamie.dodson@knology.net

www.nickgrantadventures.com/

OnStage Publishing

190 Lime Quarry Road, Suite 106J

Madison, AL 35758

Phone: 256.461.0661

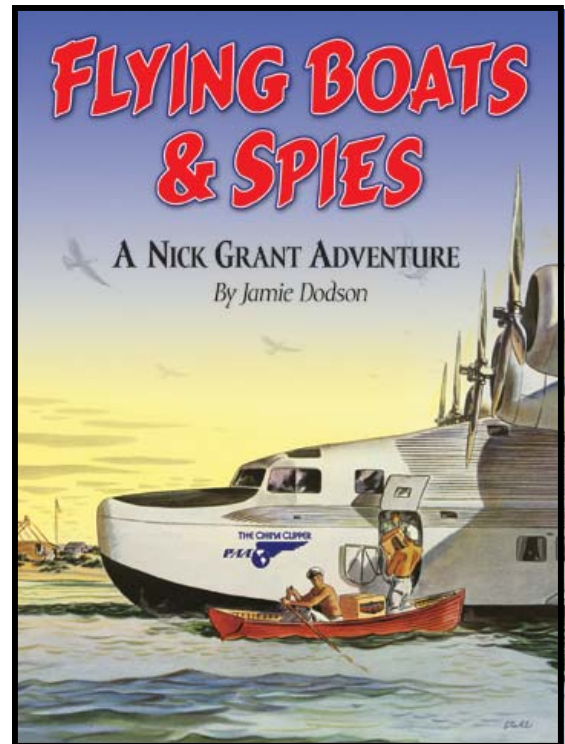
Fax: 256.461.0661

E-mail: onstage123@knology.net

www.onstagepublishing.com



Presents...



AVAILABLE MAY 2008!!

OnStage Publishing

190 Lime Quarry Road, Suite 106J

Madison, AL 35758

Phone: 256.461.0661

Fax: 256.461.0661

E-mail: onstage123@knology.net

www.onstagepublishing.com

FLYING BOATS & SPIES

A NICK GRANT ADVENTURE

Why Flying Boats?

The flying boats were designed because originally there were very few long runways that could handle a large airliner. The flying boat overcame this handicap neatly with ready-made water runways available all over the world.

Why a Supply Ship?

Pan American Airways (Pan Am) leased the *S.S. North Haven* to establish flying boat bases on remote Pacific atolls. The great flying boats did not have sufficient range to reach the distant Pacific destinations and needed places to refuel and refit.

The Espionage War

Japanese intelligence was very interested in the Pan Am Flying Boats. They were the most advanced aircraft of their time and could be compared to today's Space Shuttle. The men who flew them were held in the same esteem as the modern day astronauts.

Japan was at war with China and the Clippers represented a clear physical as well as a symbolic threat. The United States provided the majority of China's support and the Clippers cut weeks off the supply lines. Imperial Japan wanted Pan American and the *China Clipper* in particular to fail.



MACAO
 Earliest "discovery" into China. Macao was established by the Portuguese in 1557—one of the most picturesque of old world ports.

HONG KONG
 A barren island ceded to Great Britain in 1841, now most important port in China Seas, and gateway to South China.

PHILIPPINE ISLANDS
 Discovered by Magellan in 1521. Annexed to Spain in 1565; Ceded to U.S. in 1898. Viceroy status of Commonwealth, 1935.
 Distance from Guam: 1,837 miles
 From Honolulu: 8,243 miles
 From California: 7,490 miles
 To Hong Kong: 759 miles

A group of more than 7,000 islands extending 1,212 miles from North to South and 124 miles east to west. Population: 14,000,000; Total Area: 114,400 square miles; Capital City, Manila (140,000 population).

GUAM
 Discovered by Magellan, 1521; Called "Lutua South Island" because of the soil rich in native copper. Possessed by Spain, 1565. Ceded to U.S. in 1898.
 Latitude: 13° 04' North
 Longitude: 150° 04' West

WAKE ISLAND
 Discovered by Beagle, 1823; Claimed by Wilkes in 1841; Possessed by U.S. in 1859; First Col. settled in 1855 by Pan American Airways.
 Latitude: 19° 04' North
 Longitude: 155° 04' East

MIDWAY ISLANDS
 Claimed for the U.S. in 1859; First Colonized 1912; Present Population, 44.
 Latitude: 30° 12' North
 Longitude: 179° 37' West
 Distance from Honolulu: 1,784 miles

HAWAIIAN ISLANDS
 Discovered by Captain James Cook, in 1778, and originally called the Sandwich Islands. Largest group in the Central Pacific; the island chain reaches over

SAN FRANCISCO TO HAWAII
 Distance: 2,404 miles; Time: overnight.
 Time change from California: 2½ hours.

At San Francisco, direct connections are made with United Air Lines—and at Los Angeles, with American Airlines and Transcontinental—Western Air—for through overnight service to Chicago, New York and the East. At Honolulu with Inter Island Airways to other islands of the Hawaiian group.

Learn more at www.nickgrantadventures.com/